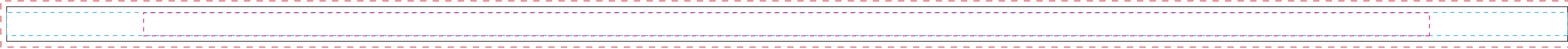


Product Name: 3/4" Heavyweight Ribbon Lanyard Dye-Sub Item #: CFCHS Item Color:	Product Area: 34" w X 3/4" h Imprint Area: 34" w X 1/2" h ; Safe Area: 28"W x .5"H Imprint Color:
---	---

Bleed Line Magenta line represents Safe AREA. Keep safe area free of critical text or graphics to avoid critical text and graphics from being crimped.



(100% actual size)

Technical Specifications for Art Proofing
<b>Text Size Minimum:</b> 1/8"
<b>Line Weight Minimum:</b> .75pt
<b>Gap Line Weight Minimum:</b> 1.25pt
<b>Vector Art Only:</b> XXX
<b>Misc. Product Specs:</b> <ul style="list-style-type: none"> <li>• PMS Approxiamates for</li> <li>• Photographic elements should be 300 DPI or better</li> <li>• Be cautious using opacity, doesn't always turn out</li> <li>• Only Vector art and Hi Res photos can be used</li> <li>• All dye sub lanyards need vector art if there is text involved with the art</li> </ul>
<b>BACK PRINT LIMITATIONS:</b> When imprinting a gradient or pattern change, the beginning and end of the lanyard need to be the same color in order to avoid harsh color transitions on the back print. If the beginning and end cannot match, the back imprint needs to be changed to a solid color or repeating pattern.

**NOTE:** due to printing process the text cannot be guaranteed to be perfectly aligned on the lanyard

- \* Imprint front and back, end to end unless noted
- \* Back side WILL NOT align with the imprint locations of the front side
- \* Light imprint colors, especially white, will experience bleeding from surrounding imprint colors.
- \* Pre-Production Samples are strongly advised to see if the PMS match is acceptable